

EXPLORE *the* EASTERN WHEATBELT EDITION 6



CENTRAL WHEATBELT
VISITOR CENTRE

www.wheatbelttourism.com

Beacon | Bencubbin | Bruce Rock | Corrigin | Cunderdin | Dowerin | Hyden | Kellerberrin
Kondinin | Koorda | Kulin | Lake Grace | Merredin | Meckering | Mukinbudin | Narembeen
Nungarin | Quairading | Southern Cross | Tammin | Trayning | Westonia | Wyalkatchem

Welcome TO THE EASTERN WHEATBELT

GO EXPLORING!

The 20 Shires of the Eastern Wheatbelt invite you to stay and join the friendly locals and experience our museums, attractions, events and festivals. With more self-drive trails than you will have time to traverse, we suggest you get off the highway on a network of sealed roads to other surprising destinations at a less hurried pace.

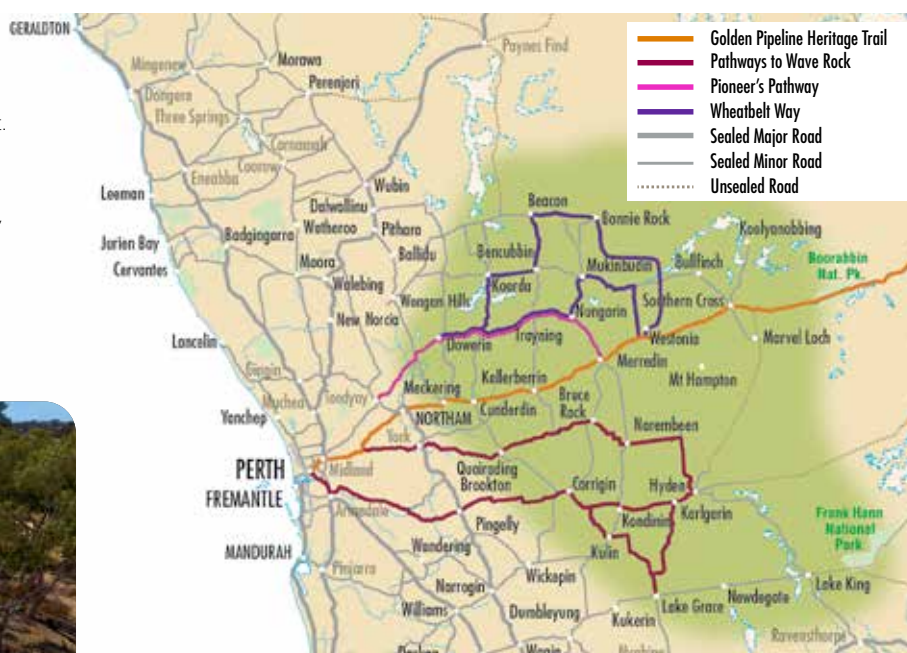
HIGHLIGHTS...

- 1 Climb ancient granite rocks for scenic vistas of open farmland & woodland
- 2 Re-visit history through the many museums, collections & historical sites
- 3 Walk or cycle along wildflower, heritage trails & town reserves
- 4 Be entertained at an iconic historic theatre or a retro drive-in theatre
- 5 Experience country hospitality at delightful cafes, restaurants & country pubs
- 6 Take in the ambience of colourful monthly market days & spring festivals
- 7 Camp out under the stars & experience our night skies
- 8 Be amazed at the outdoor art gallery on a number of Wheatbelt silos

HOW TO GET HERE

By Road: A good network of sealed roads offer several scenic self-drive trails to explore the Eastern Wheatbelt.

By Rail/Coach: Transwa operates the Prospector passenger rail service between Perth and Kalgoorlie stopping in the Eastern Wheatbelt towns of Meckering, Cunderdin, Tammin, Kellerberrin, Merredin and Southern Cross. The Merredin Link passenger rail service operates between East Perth and Merredin and coaches travel to other regional towns outside the main rail route. Concession fares apply to valid concession card holders.



Contents

	Page		
Wheatbelt Self Drive Trails	4-9	Wildflowers.....	16
Granite Outcrops.....	10-11	Enterprise, Events & Aquatic Centres ...	17
Salt Lakes.....	12	RV Friendly Towns & Destinations.....	18
Helena Aurora Ranges & Safety Tips.....	13	Services Directory	19
Museums & Collections.....	14-15	Advertisers	20-30
		More Information	31

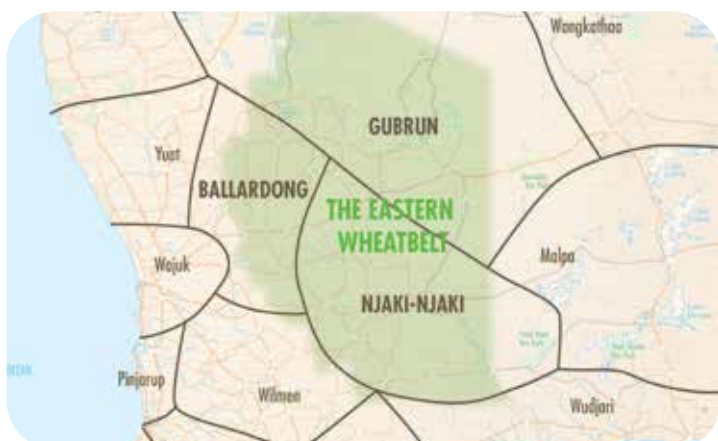
Welcome TO COUNTRY FOLLOW THE FOOTSTEPS OF OUR ANCESTORS

A "Welcome to Country" is the unwritten rule that Aboriginal people are still using and have done so for thousands of years. This acknowledgement pays respect to the Traditional Owners, ancestors and the continued cultural, spiritual and customary practices and rights of Aboriginal people. It also provides an increase in awareness and recognition of Australia's Aboriginal peoples and cultures.

The Wheatbelt region is home to 3 distinct Aboriginal groups: The Njaki Njaki Nyoongar, the Ballardong Nyoongar and the Gubrun.

The map shows an appreciation of the traditional Aboriginal cultural governance landscapes that continue to this day. These places have been as much a part of the landscape, entwined with the different geographic areas with ecological distinctions that shape the identity of Aboriginal groups to the spectacular places and scenery. As a visitor, we ask that you pay respect to the land and the places you choose to visit. We wish you a safe journey as you travel through our lands.

"Please remember that each step you take today, is in the footprints of our Ancestors".



Map of Australian Aboriginal Tribal boundaries by Tindale/Horton.



Gnamma Hole Wattoning Reserve



Njaki Njaki Dancers

Njaki Njaki Aboriginal Cultural Tours

Join local Njaki Njaki Aboriginal tour guide Mick and undertake a cultural walking tour of Merredin Peak and surrounding reserve. Learn about Aboriginal history via a walk trail up the rock and be rewarded with delightful views of town and surrounding landscape. Learn about the Njaki Njaki peoples creator that shaped the landscape we see today through the Moulyk Dreaming Tour and about artefacts and tools used by Njaki Njaki Aboriginal people. Tailor made tours available.



Merredin

Contact Mick Hayden

Tel: 0407 984 470

Email: tours@njakinjaki.com.au

Web: www.njakinjaki.com.au



Njaki Njaki
Aboriginal Cultural Tours
Sharing Culture Exploring Country

GOLDEN PIPELINE

Heritage TRAIL



THE LONGEST FRESH WATER PIPELINE ON EARTH

On your Golden Pipeline journey, explore the Wheatbelt towns and attractions along this nationally listed heritage place managed by the National Trust of WA— Meckering, Cunderdin, Tammin, Kellerberrin, Merredin, Westonia and Southern Cross.

Duration: 2 to 4 days

Distance: 560km One Way Perth to Kalgoorlie

Road Conditions: Great Eastern Highway with sealed roads or short stretches of maintained unsealed sections from the highway to the interpretation sites along the way.

Explore the route of a really impressive engineering feat, CY O'Connor's water pipeline scheme constructed over 115 years ago. Visit the original pump station sites and highlights like the Cunderdin No 3 Pump Station Museum, historical landmarks like the WWII army hospital site at Merredin Peak or Merredin's No 4 Pump Station which is an impressive stabilised ruin. Marvel at the 1968 earthquake interpretation story and memorial sites at Meckering and experience an earthquake simulation room inside the Cunderdin Museum.

Don't miss the view from the Kellerberrin Hill lookout as the pipeline takes you past rock water catchments and springtime wildflowers. See a rock wave formation and Charles Hunt's pioneer well at Totadgin Rock and Conservation Park 14kms south of Merredin. At Merredin Peak, explore the bush walk or rock walk trail to an 1890's rock wall rainwater catchment around the top of the granite outcrop leading to a rock channel and spillway into Railway Dam.

Cross the original site of the No 1 Rabbit Proof Fence at Burracoppin 20km east of Merredin

and head north from Carrabin to Westonia where history is preserved in the towns' buildings facades. Westonia's gold mining and social history is encapsulated in the remarkable Hood-Penn Museum with a mine blast simulation tunnel. A pedestrian access ramp gives you a great view of the Edna May open cut mine 1km north of the town.

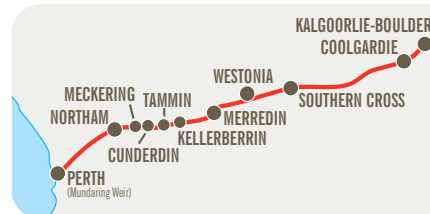
At Southern Cross take in the Yilgarn History Museum displays and impressive mineral collection. Travelling 50km east to Karalee Rock and reservoir, a remarkable early example of a timber and steel aqueduct water catchment feature with RV camping beneath the eucalypt canopy. Natural history abounds as you travel on through the Great Western Woodlands, stopping at RV campsites in Boorabbin National Park and Boondi Rock and continuing onto Coolgardie and Kalgoorlie.

For further information on the Pipeline sites visit www.goldenpipeline.com.au

Accommodation Options

There are numerous caravan parks and a number of Wheatbelt RV Friendly Towns and RV camp sites, some with toilets and/or RV dump points. If you are looking for a room, there are B & B's, self-contained units, farm stays, motels and hotels.

www.wheatbelttourism.com/accommodation



**FOR YOUR FREE
MAP & GUIDE CALL
1300 736 283 (WA only)
OR (08) 9041 1666**



Karalee Flume



Cunderdin Museum



No 4 Pump Station, Merredin

PATHWAYS TO Wave Rock



WHICH PATH WILL YOU TAKE?

Make your journey to Wave Rock an experience to remember. Enjoy country hospitality, natural bushland with wildflowers in season, spectacular night skies and immerse yourself in an agricultural experience.

Duration: 4-5 Days

Distance: 847km

Road Conditions: Sealed

Your Wheatbelt experience begins when you leave Perth on the Brookton Highway, travelling 225km to Corrigin, where you can visit the iconic Dog Cemetery, enjoy the beauty of wildflowers in spring and wander through the Pioneer Museum.

Continue 49km onto Kondinin, taking in the beautiful fauna and flora along the way. Stop and stroll through the community garden and view the creative artworks. Walk the Yeerakine Rock trail to the unique ANZAC light horseman statue, before travelling 27km south towards Kulin, home of the famous Tin Horse Highway, a fun and entertaining drive showcasing imaginative community creations. The Kulin Visitor Discovery Zone gives visitors a sense of the region's history and identity.

Travel 73km south west to view the mighty salt lake at Lake Grace with its changing colours and take in the atmosphere of an early 20th century Hospital, when you visit the only remaining Australian Inland Mission Hospital in the state. A friendly welcome awaits you at the Lake Grace Visitor Centre. Extend your journey and visit Newdegate, along the FORM Public Silo trail.

Continue northwards to the town of Hyden, with excellent overnight accommodation, dining and bright starry nights. Spend the following day exploring the internationally famous Wave Rock and surrounding attractions, before continuing 93km on the Mt Walker Road, with its colourful wildflowers, towards Narembeeen. Learn all about farming at the modern, interpretive Grain Discovery Centre, giving an insight into past and present in this typical Wheatbelt town.

Travel 39km to Bruce Rock, with its Amphitheatre and Sculpture Park, Memorials to servicemen and fabulous aquatic centre for summer fun. Continue 48km to Kokerbin Rock, a massive monolith with incredible views and a great nature spot. Drive 39kms to Quairading, check out 'El Toro', a life-size spanish bull sculpture in the centre of town and explore the amazing Nature Reserve and Nookaminnie Rock, great for wildflower spotting and watching the Wheatbelt's breathtaking sunsets. Take a leisurely trip back to Perth via the historic town of York.



FREE VISITOR GUIDE & MAP

For a memorable visit, pick up a copy of the 'Pathways to Wave Rock' Map and Visitor Guide to take along on your journey. Available from Visitor Centres or online at www.pathwaystowaverock.com.au or email roetourism@outlook.com.

FREE ROE AUDIO TOUR PODCAST



The Roe Audio Tour is a collaboration of historical stories, local and visitor information, read by community members along the pathway. The podcast is available to download for free on any Podcast App on your smart device

For further information visit the Local Government websites and time your visit to a special event, agricultural season or must see attraction.

BRUCE ROCK
CORRIGIN
KONIGININ
KULIN
LAKE GRACE
NAREMBEEN
QUAIRADING

www.bruce-rock.wa.gov.au
www.corrigin.wa.gov.au
www.kondinin.wa.gov.au
www.kulin.wa.gov.au
www.lakegrace.wa.gov.au
www.narembeeen.wa.gov.au
www.quairading.wa.gov.au

Follow us on Facebook @PathwaystoWaveRock



Pick up a Pathways to Wave Rock Map



See Springtime wildflowers



Endless photo opportunities



Take this delightful scenic route traversed by the early pioneers in search of farmland and the lure of the eastern goldfields. Starting in picturesque Toodyay nestled along the Avon River and travelling through to the regional hub town of Merredin.

Duration: 2 to 5 days

Distance: 292km One Way Perth via Toodyay to Merredin

Road Conditions: Sealed road with some unsealed access sections into nature reserves.

Discover the people who have helped make the Wheatbelt the place it is today. Learn the stories of the men from bushrangers to farmers and pastoralists and how the company that is Australia's largest exporter of grain was started right here in the Wheatbelt of Western Australia. Hear the accounts of the women who were lawyers, nurses, teachers, wives and mothers who conquered, survived and thrived in the harsh conditions of these towns that remain today. Come, take the time, learn the stories and explore the Pioneers' Pathway.

Leave the hustle and bustle of the city behind and follow Pioneers' Pathway Self Drive through the hills to the pretty farming town of Toodyay. Valley views and a patchwork of farmland make this a scenic stop for lunch at a local pub or riverside picnic spot. Continue north east to Goomalling, crossing the Avon River tributary at Mortlock River - a well-known wildflower stop during spring.

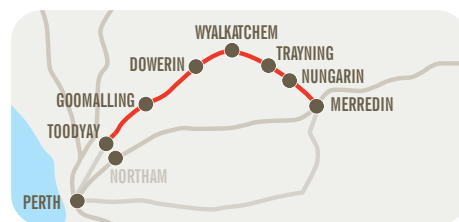
Step back in time at the heritage listed Slaters Homestead 2.5km east of Goomalling. Visit one of the earliest bulk handling wheat bins now

housing the Wyalkatchem CBH Museum with heritage machinery and rare tractor displays. Camp at the National Trust's Mangowine Homestead 14kms north of Nungarin. An impressive 1897 steam locomotive, rolling stock and railway history is on display at the Merredin Railway Museum or take in a live show at historic Cummins Theatre.

World War II history comes alive at the Nungarin Heritage Machinery and Army Museum, the Merredin Military Museum and the 2/1st Army General Field Hospital site at Merredin Peak Reserve. Walk the many nature reserves protecting large areas of natural bushland and granite outcrops where magnificent eucalypt trees dominate the landscape and seasonal wildflowers carpet the forest floor. Meet Rusty the Tin Dog and explore the Tin Dog Creek Walk Trail at Dowerin or other town reserves such as Korrelocking at Wyalkatchem, Billycatting at Trayning, Talgomine at Nungarin and Tamma Park and Totadgin Conservation Park near Merredin.

Looking for Accommodation?

There are numerous options for RV's with most towns having caravan parks and RV friendly camp sites, some with facilities and dump points. If you are looking for a bed, there are B & B's, self-contained units, farm stays, motels & hotels.



FOR YOUR
FREE BROCHURE
CALL 1300 736 283
(WA ONLY) OR (08) 9041 1666



Mangowine Homestead



Cummins Theatre



Rusty, the Tin Dog



The WHEATBELT WAY Drive TRAIL

BRIGHT SKIES BIG HORIZONS

The Wheatbelt Way self-drive trail, will lead visitors on an adventurous interpretive journey to the regional communities of Dowerin, Wyalkatchem, Koorda, Bencubbin, Beacon, Westonia, Mukinbudin, Nungarin and Trayning. Experience their natural attractions, history and heritage while offering unique opportunities to stay and experience friendly communities and open landscapes.

Duration: 3 - 5 days or more

Distance: Approximately 900km - 1,000km

Road Conditions: Sealed with stretches of good unsealed road to rock and bushland features.

This journey offers a memorable contrast of open farmlands, large rocky outcrops, with a profusion of bird and animal life. Marvel at the fascinating ways water was collected in the area, from the natural and Aboriginal gnamma holes, the pastoralists and prospectors wells to the water harvested from granite rocks in more recent times.

Depending on seasonal conditions there are carpets of small pink and yellow everlasting and numerous flowering shrubs, hakea, grevillea, wattle and eremophila, senna, dampiera and verticordia. Native orchids can be found, in early spring at the damp base of the granite outcrops while later in the season red bottlebrush and kunzea grow between the cracks.

Bird lovers will also find numerous birds wherever there is water collected on the granite rocks. Some of the rocks are massive

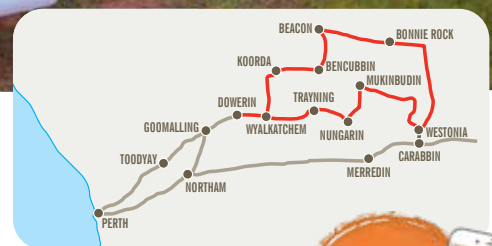
with waves, caves and a tunnel. Views from the top are always breathtaking.

A variety of museums include, army, hospital, early farm machinery, the first CBH bulk handling wheatbin and a pioneer town house.

For the blokes a visit to the many men's sheds with their old operating farm machinery is a highlight. While the ladies may like to join their country cousins at any of the several quilting and craft groups.

Wondering where to stay?

There are excellent caravan parks available in most towns with cabin accommodation or camp under the stars at free camping sites with toilets, BBQs and picnic tables. For more personalised service try a country pub or any of the B & B's available (bookings advised).



FREE APP & HARDCOPY MAP

Download the Wheatbelt Way App from your App Store now! Features:

- Offline Map: No internet connection required
- Real-time GPS: track your location on a map at all times
- Trail notes that describe the road journey between each site
- Features stories that are relevant to each site and town.
- Services: Find meal, accommodation, campsites, RV dump points, fuel or visitor centres nearby you
- Audio files that complement the information at the stopping points along the trail.

For more information visit the Wheatbelt Way website www.wheatbeltway.com.au or call Central Wheatbelt Visitor Centre **1300 736 283**.



Pergandes Sheepyard



Take a camping trip



Springtime Wildflowers, unique in the world

SELF DRIVES TO Explore!



PUBLIC SILO TRAIL

Discover WA's largest outdoor art gallery celebrating the states regions in Northam, Merredin, Newdegate, Pingrup, Ravensthorpe, Albany and Katanning - Make this your next road trip!

Duration & Distance: Variable dependant on direction of travel and number of sites visited.
Road Conditions: Major highways and sealed roads, some art sites with viewing laybys and interpretive signage.

Over three years the PUBLIC Silo Trail, by cultural organisation FORM, has created expansive world class murals on CBH Group grain silos in seven regional towns. Completed in 2018, this permanent, open-air 'gallery' links rural and coastal towns across Western Australia's southern regions, spreading a visible legacy across silos, walls and electrical boxes from Northam to Albany.

Hit the road and explore this art trail painted by local and international urban and street artists to appreciate the great quality each silo has to offer with a very different theme and diversity of artwork at each one.

A publication 'Stories from the Silo Towns' offers unique first-person stories through interviews and imagery. Collect the map & guides or purchase the book at visitor centres and Community Resource Centres' along the trail or visit www.publicsilotrail.com



FORM.
building a state of creativity

Below - Brenton See for PUBLIC Silo Trail Newdegate, 2018. Photograph by Bewley Shaylor, courtesy of FORM. (Newdegate Silos)

THE GRANITE AND WOODLANDS DISCOVERY TRAIL

Hyden to Norseman - Explore one of the world's greatest untouched temperate woodlands.

Duration: 2 days+

Distance: Hyden to Norseman 302km

Road Conditions: Unsealed maintained road will be subject to closure after rain.

With quality interpretation there are 16 designated places to stop and immerse yourself in natural and cultural history, some sites with walk trails, picnic facilities and/or camping areas. This trail offers an alternative route to or from Kalgoorlie or Esperance to Perth or the Eastern States. For the more adventurous off-road traveller looking to explore and camp in a remarkable landscape. Travel prepared, there are no food, fuel or services along this trail.

Before you leave, check road conditions with the Shire of Kondinin **T: (08) 9889 1006** or the Shire of Dundas **T: (08) 9039 1205** and www.emergency.wa.gov.au



Newdegate Silos



Wave Rock



Great Western Woodlands



JOHN HOLLAND WAY AND THE HOLLAND TRACK

Follow an early route blazed by John Holland cutting a cart track between Broomehill via Hyden to Coolgardie for use by horse and camel teams to transport goods and supplies to the goldfields.

Duration: 3 days+

Distance: Broomehill to Coolgardie 600km

Road Conditions: Sealed and unsealed roads, sections 4WD only

2WD The John Holland Way is suitable for conventional 2WD travel and connects the regional towns between Broomehill and Coolgardie linking the fertile farming region of WA's South West corner to the mining riches of the Coolgardie Goldfields traversing natural bush landscapes.

4WD The Holland Track is for well-prepared 4WD travellers ONLY. The track connecting the towns of Hyden and the historic mining town of Coolgardie is 350km and is not maintained or serviced **and at times impassable**. This route slices through natural bushland, past the Rabbit Proof Fence and stunning rock formations.

Before you leave get road conditions from the Shire of Kondinin **T: (08) 9889 1006** or the Coolgardie Visitor Centre **T: (08) 9026 6090**

THE GRANITE WAY

A short self-drive trail encompassing some stunning granite outcrops, the largest being Kokerbin Rock and impressive views to Mt Stirling and Mt Caroline.

Duration: A few hours to take in the sights or stay overnight at Kwolyin Campsite

Distance: 60km

Road Conditions: Sealed and maintained unsealed roads.

A journey to some of the most amazing and iconic granite rocks in the Wheatbelt, spectacular reserves and farming vistas. Interpretation at various sites, giving trail goers a greater sense of the rich flora and fauna, layered histories, fascinating geology and Aboriginal cultural history.

A partnership between the Shires of Bruce Rock, Quairading and Kellerberrin with a purpose-built free camping facility on the old Kwolyin townsite. The Kwolyin campsite boasts toilets, camp kitchen, picnic shelters, BBQ, fire pits, walking trails to Coarin Rock and a pioneer walk through the old town site.

For road conditions call Shire of Bruce Rock **T: (08) 9061 1377** or Department of Parks & Wildlife, Merredin **T: (08) 9041 6000**



Fascinating Rock Formations



Route along the Holland Track



Kwolyin Campsite



GRANITE Outcrops

WHEN A ROCK IS NOT A ROCK!

Granite outcrops are known as monadnocks or inselbergs (isolated rock hills or knobs) and monoliths (a single massive stone or rock). Monadnocks are largely formed by erosion caused by wind and water which exposes these geological formations. The monadnocks are made of hard and solid metamorphic or igneous granite-gneiss rock which is more resistant to erosion. Rising abruptly from the gently sloping or level surrounding plain, they dominate the surrounding bushland.

The cultural and spiritual connection between the many granite outcrops, waterways, lake systems and Aboriginal people have been maintained for thousands of years. These land formations provided many elements of survival in the form of shelter, food, water, camping, ceremonies, a burial place, paintings and dreaming stories.

Early Europeans saw the rainwater catchment potential of many of the granite features when looking for water storage for railway use. Many have a series of man-made rock walls and aqueducts which channelled the rainfall run-off into catchment dams and weirs.

These outcrops create a variety of microhabitats for lichens, mosses and ferns. In hollows, trees and shrubs take hold and provide seasonal resources and refuge for a range of wildlife. These areas have rich biodiversity and many endemic species. Great care should therefore be taken to avoid impacting on this unique ecosystem.



Please **DQ-NOT** drive on the granite outcrops as despite their rugged appearance they support a very fragile environment and provide rock shelters for several endemic reptile species.

A few reserves are managed by the Department of Biodiversity, Conservation & Attractions (DBCA) where camping, dogs and the making of fire are strictly prohibited. For more information on Parks and Wildlife managed reserves please contact the Wheatbelt district office **(08) 9041 6000**.

GRANITE OUTCROPS IN THE CENTRAL WHEATBELT MAP & GUIDE



Bulgin Rock Reserve

Turn south off the Gt Eastern Highway 10km east Meckering or 12km west of Cunderdin onto Collins Road. Turn right onto Burges Rd, follow through to the intersection of Bulgin and Burges Rd, where you will find a beautiful rocky outcrop to your left. Sitting amongst the sheoak woodland you'll probably glimpse a variety of birds, mammals and an abundance of colourful wildflowers including a beautiful display of orchids in spring.

Frog Rock & Dam

Situated off Gt Eastern Highway 25km south east of Moorine Rock. A small catchment dam is located beneath a large rock with wave formation.

Karalee Rock & Dam

The Karalee reservoir, rock catchment and aqueduct is located 7km off the Gt Eastern Highway 50km east of Southern Cross. A natural rock formation adapted to maximise the catchment, delivery and storage of rainwater that was essential in the railway development to the Goldfields.

Keokanie Rock

Located 25km north of Bodallin on the Bodallin North Road. An easy climb to the summit is rewarded by great views. A place to stop on the way to Baladjie Rock further north.

Merredin Peak Reserve & Railway Dam

Follow the Golden Pipeline signs to Benson Road. This early water catchment scheme provided water for both the town and railway. A rock wall was built around the contours of the peak which led to a 100m channel and into a 25million litre capacity storage dam. Interpretive signage brings the history of the pipeline alive along two walk trails.

Totadgin Conservation Park & Hunts Well

Located 14km south of Merredin on the Bruce Rock Road. Two carpark entries, one to walk trail and historic rock lined Hunts Well and one with wheelchair access to rock wave formation.

Yorkrakine Rock

Situated 26km north of Tammin this spectacular granite outcrop rises 341m. A good access road to the base of the rock which is surrounded by largely untouched York gum and Jam wattle acacia woodland. One of few remnant tracts of vegetation being an important haven for important flora and fauna.



Toapin Weir

GRANITE OUTCROPS IN THE PATHWAYS TO WAVE ROCK MAP & GUIDE



Anderson Rock, Hidden Hollow, Twine Reserve & Roe Dam

Narembeen has some picturesque granite outcrops for you to explore, visit these places and see abundant flora and fauna. Locations include Anderson Rock & Twine Reserve, located off Hyden-Mt Walker Road, Hidden Hollow, located off the Narembeen - Mt Walker Road and Roe Dam, located off Roe Dam Road.

Bruce's Rock

Situated 2km east of Bruce Rock in a nature reserve on the Bruce Rock East Road. There are two pioneer wells located at the picnic site at the foot of the rock and good walks are to be enjoyed over the rock outcrop.

Buckley's Breakaway

Located 70km east of Kulin, off the Holt Rock Road on route to Wave Rock, Buckley's Breakaway is a picturesque landform where erosion has cut through the orange laterite and formed spectacular white cliffs and gullies from the underlying clay. The gully is dominated by Cypress Pine, Blue Mallet and Box Poison, but it is the top of the "breakaway" which carries the most interesting plants. It's the natural garden with something in flower all year round. In the shelter of the shrubs, look for delicate orchids, trigger plants and sundews. At the site you will find interesting interpretive information about the area, a fabulous picnic spot and endless photo opportunities!

Gorge Rock

Located 20km south east of Corrigin, offers spectacular panoramic views of the surrounding farmland. Enjoy the short walk through picturesque bushland to reach the natural rock pool, which was once the local swimming hole, before an Olympic pool was constructed.

Jilakin Rock & Lake

Follow the Tin Horse Highway 20km east of Kulin on Holt Rock Road. At 150km from the main Jarrah tree belt, the site boasts the most isolated known stand of Jarrah surviving on the water runoff and quarry soils at the base of the rock. An easy climb to the top provides spectacular views of Jilakin Lake and surrounding Wheatbelt. Wildflowers form a wonderful display in season.

Kokerbin Rock

Situated 40km west of Bruce Rock, this impressive outcrop is Australia's third largest monolith. Explore the natural bush tracks to discover Dog Rocks, a wave wall, caves and panoramic views.

Kwoiyin Camp & Coarin Rock

Situated 9km south east of Kokerbin Rock, this site has been designed to cater for RV groups with camp kitchen, dedicated tent sites and bush caravan bays. Enjoy an open campfire (April to September only). Camp amongst pristine bushland, with seasonal orchids, flowering annuals and sandalwoods surrounding the camp. Take a stroll along the dedicated bush walks and absorb the history along an interpretive pioneer trail around the old Kwoiyin town site.

The Humps & Mulka's Cave

Located 16km north of Wave Rock, its best-known feature is Mulka's Cave which holds one of the most significant Aboriginal rock art sites in WA. Two excellent walking trails with interpretation.

Toapin Weir & Rock Catchment

An easy breezy 8 kilometres north (and slightly west) of the Quairading town site. Climb to the top of the rock with the assistance railing and take in the picturesque views of the region. Toilet facilities, electric BBQ, shade and info boards can all be found in the car park. It is also a quaint, quiet overnight camping spot with immaculate skies for pristine star gazing.

Wave Rock & Hippos Yawn, Hyden

Located 4km east of Hyden on the Wave Rock Road. Believed to have formed over 2700 million years ago "the wave" stands an impressive 14m high and 110m long. It was formed by gradual erosion of the softer rock over many centuries. The colours of the wave are caused by rain washing carbonates and iron hydroxide down the face, forming vertical stripes of greys, oranges and yellows.

Yeerakine Rock

Situated 12km south of Kondinin on Sloan Road. Enjoy expansive views from the summit and appreciate the workmanship of the rock catchment established in 1927 to provide water for Kondinin. To commemorate the ANZAC centenary, a Light Horse Memorial silhouette statue has been erected on the rock which makes an amazing backdrop to the moving ANZAC Day dawn service held annually at Yeerakine Rock.

GRANITE OUTCROPS IN THE WHEATBELT WAY MAP & GUIDE



Baladjie Rock

This extensive granite outcrop is in attractive woodland on the Koorda-Bullfinch Road 42km north east of Westonia. Climb the main rock for spectacular views of the nearby Baladjie Lake system and surrounding landscape.

Beringbooding Rock

Located on the cnr of Beringbooding and Cunderin Roads 65km north east of Mukinbudin, this site has the largest rock water catchment concrete tank in Australia. Beringbooding has an amazing balancing boulder, a huge gnamma hole and the Kalamaia Tribes paintings of hands in a cave at the rear of the rock. Two early pioneer wells are nearby.

Billiburning Rock & Reserve

This outcrop 35km north of Beacon provides excellent views of both cropping and pastoral country. Displays of masses of wildflowers in spring. A pioneer well and gnamma hole are nearby.

Billyacatting Hill & Reserve

Located 9km north of Kununoppin this large granite outcrop has two interpreted walk trails, one loop trail around base of the rock and another to the peak for amazing views and wildflowers in season.

Danberrin Hill Reserve

A pleasant drive 20km north from Hines Hill on Hines Hill North Road, this is a mass of wildflowers in season.

Datjoin Rock & Datjoin Well

Travel 18km east of Beacon on the Burakin-Walki Road to the pioneer well and camping area. Also known as "Brockman's Hide Out" where Brockman, his wife and twelve children took cover under these rock formations when he broke parole and was on the run from police in the 1960's. A narrow track entrance. No RV/caravan access.

Eaglestone Rock & Lake Brown

A spectacular natural granite rock and cave formation 20km north east of Nungarin. Enjoy great views over Lake Brown to the south with access off South Road. A popular spot for organised group rock climbing.

Elachbutting Rock

Located 100km north of Westonia or 75km north east of Mukinbudin on the Echo Valley Elachbutting Road. The name Elachbutting means "big thing standing", appropriate for a prominent landmark with excellent views from the top. It has two spectacular colourful waves, a 40m tunnel "Monty's Pass", caused by a rockslide and a large acoustic cave named "King's Cave".

Marshall Rock

Located 5km south east of Bencubbin on Marshall Rock South Road, taking in 360° views of the surrounding cropping land from the top. Nearby, the Pergandes sheep yards are constructed from local granite slabs not far from the remains of an original settler's homestead.

Mollerin Rock

Located 50km north of Koorda on the Kulja Mollerin Rock Road. During late winter and spring this nature reserve has a picturesque display of wildflowers and beautiful panoramic view from the top of the rock.

Newcarlbeon Rock

Located 20km north of Koorda on Newcarlbeon Road. During late winter and spring this nature reserve has a picturesque display of wildflowers and a beautiful panoramic view from the top.

Sandford Rocks Nature Reserve

Located 10km north east of Westonia along Boodarockin Road, this reserve protects 806ha of granite outcrop with rock pools, wildflowers and natural woodland.

Talgomine Reserve

Located 12km east of Nungarin a large open rock area with picturesque valley between rocks. A great wildflower spot in season.

Yanneymoon Rock & Reserve

Located on the corner of Elachbutting and Echo Valley Roads, 75km north of Westonia, this 513ha reserve comprises granite rock formations and bushland. Spot the abundant, ornate dragon lizard (Ctenophorus ornatus) which is an inhabitant of Yanneymoon Rock.

1080 BAITING

Please be advised that baiting programs using 1080 poison are carried out across pastoral leases and Conservation Parks and Reserves to control wild dogs, foxes, feral cats, feral pigs and rabbits. Exercise caution when visiting these areas with domestic pets. Owners should always keep their pets under control on leash and consider the use of muzzles to prevent them picking up a bait.

NATURAL Salt Lakes

NATURE'S DRAINAGE SYSTEMS

The waterways and wetlands of the Wheatbelt have been shaped over millions of years by the climate and geology. The Wheatbelt landscape of today is very flat and the ancient river valleys (paleochannels) have become filled with sediment. When significant rain falls, the salt lakes become fully functional aquatic systems with aquatic flora and fauna usually lying dormant as buried seeds and eggs awaiting the right conditions.

Unless the rainfall is very heavy many of the lakes are very saline (saltier than seawater) or dry for most of the year. Even in their dry state they offer stunning scenery and great photo opportunities. Salt lakes are wetlands which are fragile natural environments and are particularly susceptible to the physical impacts from off-road vehicles, motorcycles and quad bikes. These vehicles should NOT be driven on, or near the lake edge.

Salt Lakes in the Central Wheatbelt

Lake Baandee 🏠 🚶 🚲 🚣

A popular ski lake 25km east of Kellerberrin off Great Eastern Highway. The Inland Water Ski Club have created recreation facilities, with swimming and skiing only possible after a significant rain event.

Lake Koorkoordine

Located 6km north of Southern Cross on the Bullfinch Road, this lake is named after the Aboriginal words for meat (Koorkoor) and place of (dine). It's here you will find Hunt's Soak one of many of the remarkable daisy-chain of wells and soaks which provided the early prospectors with fresh water until CY O'Connor built the water pipeline. Due to the water and wind erosion over the years some very interesting miniature caves, cliffs and bays await your discovery.

Salt Lakes in the Pathways to Wave Rock

Kondinin Lake

A large salt lake 5km west of Kondinin and after sufficient rain there is an abundance of water birds and ski and sail boat activities. A colourful interpretation panel provides interesting information on the lake history, geology, flora and fauna.

Lake Grace

Located 10km west of Lake Grace, it comprises two separate water bodies, Lake Grace North and Lake Grace South making it one of WA's biggest inland salt lakes. Viewed from the visitors' information bay on its western side, the lakes provide an amazing sight or for

panoramic views of the lake system visit the lookout 2km to the west.

Lake King

Approaching the town of Lake King from the west you are greeted with astounding sights. The salt lake is scattered with natural scrubland and seasonal wildflowers. A great photo opportunity of gleaming salt crystals as the sun sets over the often-dry lakebed.

Lake Magic

Situated 1km north of Wave Rock adjacent to Wave Rock Resort. The water in the lake is clear but very salty and the lake base is made of gypsum and is surrounded by beach sand.

Close to Lake Magic is a Salt Pond, a 150m round, 7m deep swimming pond. Minerals and gypsum provide buoyancy and therapeutic properties greater than those of the Dead Sea.

Pink Lake

This local phenomenon is located 11km east of Quairading on the Bruce Rock Road. At certain times of the year the south side of the lake is a distinctive pink colour while the north side remains blue. Summer evaporation causes the water level to drop and salt builds up on the old tree stumps and fence posts. It is the salt that causes the pink colour once water returns to the lake.

Statues Lake

Located 10km west of Kondinin on the Corrigin-Kondinin Road. View the eclectic statues created by a local Kondinin farmer Kelly Browning, from star pickets depicting various farming themes – 'waiting for hay', 'clearing the land', 'waiting for rain', 'shearing the sheep' and 'inspecting the crop'.

Wakeman Ski Lake and Nature Reserve 🏠 🚶 🚲 🚣

Located on Soldiers Road 13km north east of Narembene, the lake has undergone major work to harvest water back into the natural lake. Popular locally for water-skiing after a significant rain event. Before entering the lake with boats, please contact the Narembene Community Resource Centre T: 9064 7055

Salt Lakes in the Wheatbelt Way

Cowcowing Lake

Lies 26km to the north of Wyalkatchem on the Wyalkatchem-Koorda Road. This lake gives it name to the Cowcowing siding and covers an area of 15,000 hectares.

Dowerin Lakes

Located 8km south of Dowerin, originally an ephemeral freshwater lake system and site for the original town settlement in 1895. This lake turns pink at certain times of the year and does not disappoint if anyone is looking for a pink lake experience closer to Perth.

Lake Askew

Easily accessed along the Beacon-Bencubbin Road, this lake offers magical photography opportunities especially taking in the star-studded night skies.

Lake Brown

East of Nungarin, this salt lake located at the base of Eaglestone Rock off the Lake Brown South Road. Enjoy great views over the salt lake to the east and north and all the amenities available at Eaglestone Rock.

Lake Campion 🏠 🚶 🚲 🚣

Located on Stock Road north-east of Nungarin, Lake Campion is a salt lake which during the wildflower season is sprinkled with pink everlasting. White winged fairy wrens inhabit the sapphire margins of the lake. A BBQ area is available by the lake on the Chandler-Nungarin Road.



HELENA & AURORA RANGE

(Bungalbin)

A BANDED IRONSTONE FORMATION (BIF)

The Helena and Aurora Range is a special place in the Great Western Woodlands. It is situated 100km north of Southern Cross, adjacent to the Mount Manning Nature Reserve. The name Bungalbin comes from the Kalamaia language of the Kalamaia Kapurn people, Traditional Owners of this country. Explorer Alexander Forrest named the range after Helena Aurora Monger, the daughter of an early settler John Monger.



The range is 704m above sea level and 200m above the surrounding plain. It is the highest range for hundreds of kilometres in any direction. The main part of the range twists and turns for 10km and is made up of distinctive Banded Ironstone Formation (BIF) outcropping. You will be uplifted by the spectacular scenery, ancient rocks that form outcrops, overhangs, rock faces and caves plus remarkable flora and birds especially in spring.

Bungalbin is the larger of the three highly significant intact BIF ranges in the Great Western Woodlands, with unique BIF outcropping. It is currently a Conservation Park that has National Heritage value. The WA Government is currently looking at making it a National Park to give it a greater protection, as under WA Law a Conservation Park status still allows mining.

The track to the ranges from Koolyanobbing (60km north of Southern Cross), and the Mt Dimer Track in the Great Western Woodlands are 4WD only and road conditions vary.

There are no facilities at the ranges, please take plenty of food and water and take your rubbish out with you – take only photos, leave only footprints. Visit www.helenaaurorarang.com.au

Above photo credit: Carl Erbrich.

EASTERN WHEATBELT *travel tips*

For a safe and enjoyable trip please consider the following travel tips and information. In Australia road users need to drive on the left-hand side. Visit www.roadrules.rsc.wa.gov.au

Driving Tips

- Always tell someone where you are going, your return dates and your itinerary.
- Make sure your vehicle is in top mechanical condition and is fitted with a HF, RFDS Radio or take a satellite phone for remote trips.
- Check road conditions before departure. Rain can make some tracks and roads impassable. When travelling on unsealed roads, exercise caution and 'read' the road well ahead of the vehicle.
- Carry extra food, water, fuel and vehicle spares if you are travelling on remote tracks.
- In event of a breakdown in a remote location, remain with your vehicle.
- The Wheatbelt can be very hot in summer. If you are travelling at this time of the year make sure you are carrying plenty of drinking water.
- Roads and tracks on private property should not be used without the landholder's permission. Leave gates as you found them.

- Take care at all railway crossings. Train movements can be irregular and not all crossings have flashing lights.
- Oversize slow-moving agricultural machinery may be encountered on highways and local roads, so take care when overtaking.
- Dust can obscure vision when travelling or passing on unsealed roads, slow down and don't overtake.
- Beware of wandering livestock and wildlife, especially at dusk and dawn when visibility may be poor, and they become more active.
- Be prepared! Pack a first-aid kit.
- Slow down on corrugated dirt roads and always drive at a speed suited to the conditions.

Road Trains

These multi trailer heavy haulage vehicles are common along many regional WA highways and the mining and agricultural areas. Road trains can often have up to four trailers and on the open road can travel at speeds up to 100kph. Don't overtake a turning vehicle.

Potable Water

Granite outcrops and lakes do not guarantee water, nor the quality of water if available. Always carry ample fresh water for drinking and camping.

Travelling with Pets

Domestic pets are not permitted in any WA national parks, conservation parks, nature reserves, marine parks and marine nature reserves where 1080 baiting programs for wild dogs may take place.

Nature and Wildlife

When bushwalking or visiting nature reserves and parks do not disturb wildlife, remove plants, rocks or aboriginal artefacts. In warmer months watch out and stay clear of snakes. Always have a well-equipped first-aid kit nearby and know how to use it in case of emergencies.

Mobile Phones

Telstra is the main service provider in the area. Mobile phone coverage will vary with other providers. A satellite phone is recommended for remote travel.

Restricted Burning

Visit the Dept. Fire & Emergency Services website www.dfes.wa.gov.au/totalfirebans/Pages/index.html for Total Fire Bans or the Local Governments for prohibited burning periods during the summer months. Failure to comply will result in a fine.



MUSEUMS & Collections

A PAST NEVER FORGOTTEN

A strong thread of history connects the Eastern Wheatbelt towns from early exploration, sandalwood cutting, gold prospecting, pioneer farming, water pipeline, railway construction and military bases. Today there is a wealth of history to be explored through visiting these well-presented collections. A great start to trace your Wheatbelt pioneering ancestors.

Bruce Rock

Bruce Rock Museum

Exhibits feature district lifestyle in the old bank building. Wander through the grounds to a blacksmith's shop, an authentic one-teacher school and a replica mud brick cottage with pre 1940's furnishings.

Address: Johnson Street
Open: Mon to Fri 2pm-4pm
Admission: Free

Cunderdin

Cunderdin Museum

See ad below

Corrigin

Corrigin Pioneer Museum

This collection of tools and restored farm machinery includes tractors in working order. See the blacksmith's shop, the old one room school, the shearing shed and a collection of district photographs and other memorabilia, that commemorates early settlers.

Address: Entry from Brookton Hwy
Phone: 0427 920 737
Open: Sun 2pm-5pm, Wed 1pm-4pm (other days by arrangement)
Admission: Entry fee applies

Dowerin

Dowerin District Museum

View how settlers lived during 1915-1930's in a house furnished with many artefacts from the period. A saddlery shop front contains early business memorabilia and pioneer history.

Address: 16 Cottrell Street
Phone: (08) 9631 1013 or (08) 9631 1056
Open: First Saturday of the month except January and February
Admission: Entry by donation

Karlgarin

Tressie's Museum

A collection of pioneer farming tools and equipment. A working display of gramophones and 78 records is also a feature.

Address: 4313 Kondinin Hyden Rd
Phone: 0475 895 043
Open: Daily
Admission: \$3

Kellerberrin

Pioneer Museum

Folk museum featuring local memorabilia is located in the old agricultural hall (built 1897). A key can be obtained from the shire office. Pioneer Park has a display of farming implements and machinery.

Address: Cnr Leake & Bedford Street
Phone: (08) 9045 4006
Open: Sun 10am to 12 pm and by appointment on Mon to Fri
Admission: Gold Coin donation

Hyden

The Lace Place

This international collection dates back to the 1600's. It features hand-made and machined lace, antique gowns and a wedding dress collection, including an offcut from the 1981 wedding veil of the Princess of Wales.

Miniature Soldier Museum

This amazing collection of over 10,000 pieces made with original moulds and collected by Alex Smith displayed in the series of the great wars of the eras including a 6m long display of the 1953 Coronation of Queen Elizabeth.

Wave Rock Wildlife Park

The wildlife park houses a wide range of Australian animals and exotic birds in a natural bush environment. See white kangaroos, golden possums, hairy nosed wombats and get up and personal with the friendly koalas.

Address: Wave Rock Visitors Centre
Phone: (08) 9880 5182
Open: Daily 9am-5pm
Admission: Entry fee applies

Pioneer Town – Yesteryear Memorabilia Museum

Situated near base of Wave Rock is the 1930s Pioneer General Store. There are memorabilia filled rooms including a garage, bedroom, general store and hotel bar.

Address: Wave Rock Road
Phone: (08) 9880 5022
Open: Daily 8:30am-6pm
Admission: Entry fee applies

Purchase a special Gold Pass for admission to all Hyden's museums and collections.

Koorda

Koorda and Districts Museum

Housed in the old hospital buildings the museum features displays of medical instruments and hospital equipment together with early settler's personal effects, equipment, photographs and machinery.

Address: Ninghan Road
Phone: (08) 9684 1219
Open: By appointment
Admission: Entry fee applies

Koorda Motor & Military Museum

This museum has an extensive private collection of motor, garage and military memorabilia ...from original classic and muscle cars, models and military displays from the Boer War to Afghanistan

Address: 28 Allenby St, Koorda
Phone: 0429 080 258
Open: By appointment
Admission: Entry fee applies

Cunderdin Museum - No.3 Pump Station



Engineered by CY O'Connor and built in 1902, the Golden Pipeline is one of Australia's greatest engineering feats.

- Vintage Machinery
- Golden Pipeline Heritage Trail
- Meckering Earthquake
- Goldfields Railway
- Dainty's Daughter

Open daily 10am - 4pm

Cunderdin

100 Forrest Street, Cunderdin
Tel/fax: (08) 9635 1291
Email: museum@cunderdin.wa.gov.au



THE GOLDEN PIPELINE
A NATIONAL TRUST PROJECT



Kulin

Butler's Garage (Kulin Museum)

Originally operating as Butler's Garage, this 1920s building, has been restored to house the Shire's museum.

Address: 77 Johnston Street

Phone: (08) 9880 1009

or 0408 462 484

Open: Wednesday & Saturday or by appointment (08) 9880 1058

Admission: Gold coin donation

Lake Grace

Australian Inland Mission Hospital Museum

One of three remaining Australian Inland Mission Hospitals and the only one in WA, this museum will take you back to some of the old style medical wards and artefacts of an early 20th century rural hospital.

Address: Parking off Stubbs Street

Phone: (08) 9865 2140

Open: By appointment

Admission: Donations welcome

Merredin

Merredin Railway Museum

See ad below

Merredin Military Museum

A vast collection of memorabilia, uniforms and vehicles some restored to working order from WWI onwards. A prized exhibit is "huey" a former RAAF and Army Aviation Iroquois UH-1H helicopter.

Address: Great Eastern Highway

Mobile: 0429 411 204

Open: Daily 10am – 3pm

Admission: Entry Fee Applies.



Merredin Military Museum

Narembeen

Narembeen Grain Discovery Centre

A modern state of the art interpretive discovery centre focusing on the story of WA's grain industry from the paddock to the plate. The Centre features visual and interpretive displays on the agriculture industry.

Address: Located within the

Narembeen Roadhouse

Phone: (08) 9064 7315

Open: Mon to Sun 9am-5pm

Admission: Gold coin donation

History Museum

This museum contains a visual history of the district and includes photographs of early pioneer practices. Extensive files of Narembeen family history are also kept here.

Address: Latham Rd

(Old Road Board building, near the Town Hall)

History & Machinery Museum

This museum contains an interesting mix of photos and antiques from our pioneers. The outdoor museum displays old farm machinery and implements.

Address: Savage Street

St Paul's Museum

The St Paul's Church museum was consecrated in 1929 and opened as a museum in 1969. Restored in 1999 it is a memorial to the pioneer women of the Narembeen district.

Address: Longhurst Street

Spotter's Hut

Initially built as a spotters post for the Air Observers Corp for observing enemy planes in WWII and later used as an infant health clinic. Officially opened on 25th April 2015 as a museum to mark the Centenary of ANZACs, the hut contains many exhibits of war memorabilia.

Address: Longhurst Street

For Narembeen museum tours contact the Narembeen CRC (08) 9064 7055

Newdegate

Hainsworth Museum

The general store and tearoom was designed by Charles Hainsworth, its first owner, and was built by a ships' carpenter. Operating from 1934 until 1972, now a memorable example of a 1950's store and recollections of a building at the heart of the community.

Address: Corner of Mitchell and Collier Streets

Phone: 0409 606 207

Open: By appointment

Admission: Gold coin donation

Nungarin

Mangowine Homestead

Once an important wayside stop for the travellers to the goldfields this settler homestead is one of the best preserved examples of early farm homesteads (c.1876) in the eastern Wheatbelt. An interpretive walk trail takes you from the homestead to a complex of wayside inn, cellars, wells and the site of an old barn and family grave. A RV friendly destination, caravans and camping welcome.

Address: 737 Karomin North Road

14km north of Nungarin

Phone: (08) 9046 5149

or 0427 190 794

Open: Mon, Tue, Thu, Fri 1pm-

4pm & Sat, Sun 10am-4pm

Admission: Entry fee applies

Nungarin Heritage Machinery and Army Museum Inc

Housed in a massive ex-army workshop that played a vital role in the defence of Australia during WWII. There is an impressive 10th Light Horse display, armoured vehicles and military equipment as well as a huge range of agricultural equipment that reflects the lives of our Wheatbelt pioneers.

Address: 26 Second Avenue

Phone: (08) 9046 5040

Email:

nungarinheritage@bigpond.com

Open: Daily 9am-4pm

Admission: Entry fee applies

Southern Cross

Yilgarn History Museum

The Museum is housed in the oldest (1890's) civic building east of York where Paddy Hannan took out his Miner's Right and Arthur Bayley registered his Coolgardie claim. See a working model of a gold battery, a camel wagon, a fascinating collection of minerals, machinery, photographs and domestic memorabilia and much more.

Address: 26 Antares Street

Open: Mon to Thurs 9:30am-

11:30am and 1:30pm-3:30pm,

Fri 9:30am-3:30pm, Sat 9:30am-

12pm Sun 11am-3pm

Admission: Entry fee applies.

Westonia

Hood-Penn Museum

Located in a Façade of the original Club Hotel, the Hood-Penn Museum boasts a variety of social history scenes, complete with lifelike mannequins reflecting the early days in Westonia. The museum also includes a mine tunnel with blast simulation that aims to replicate work life in an early Westonia gold mine.

Address: Wolfram Street

Phone: (08) 9046 7063

Open: Mon to Fri 9am-4:30pm

Sat to Sun 10am-12pm

Admission: Entry fee applies

Wyalkatchem

See ad below

Yelbeni

Yelbeni Centenary Museum

An informative collection of local history through photos, plaques and vintage farm machinery.

Address: Goomalling-Merredin

Road, Yelbeni

Phone: (08) 9682 5012

Open: Keys can be collected

from Yelbeni Store, Mon-Fri

8:30am-5:30pm, Sat to Sun

8:30am-10:30am

Merredin Railway Museum

Merredin Museum and Historical Society invite you to explore Merredin's railway and social history. An extensive display of railway memorabilia and rolling stock including the 1897 locomotive that hauled the Kalgoorlie Express. Marvel at the farming pioneers of Merredin and district with a visit to the Pioneer Women's Room and the Memorial Rose Garden.

Merredin

Great Eastern Hwy adjacent

to Merredin town centre.

Tel: 0438 814 339 (President)

Email: merredinmuseum@gmail.com

Open: Mon-Sat 9am-3pm,

Sun 11am-2pm. Closed Christmas

Day, New Year's Day, Good Friday.

Admission: Entry fee applies

Run by dedicated group of volunteers. Changes due to unforeseen circumstances may occur.



Wyalkatchem CBH Museum

The Wyalkatchem CBH Museum is a fine collection of agricultural history and memorabilia related to life in the Central Wheatbelt during the twentieth century, containing over 1,000 items on display including some very rare tractors restored to original condition.

Open Week Days 9am - 4:30pm

Access via Wyalkatchem CRC,

Railway Terrace, Wyalkatchem.

Wyalkatchem

Web: www.wyalkatchemcbhmuseum.com.au



Wildflowers



A WHEATBELT WONDER!

The south-west of WA (which includes the eastern Wheatbelt) is the only internationally recognised flora biodiversity hotspot in Australia. The Wheatbelt contains more than 25% of the threatened flora in WA.

The best times to visit for wildflower displays are during July to October (late winter-spring), but remember this spectacular floral event is very much dependent on significant rainfall in late autumn and winter. The cereal crops are also ripening at this time of year with extensive yellow fields of canola.

The wildflower season is one of the eastern Wheatbelts' most precious natural treasures attracting visitors and special interest groups annually. Woodlands come alive following significant winter rain as annual species including everlastings and orchids produce a sensory spectacular of colour and scent. To appreciate these remarkable displays up close, take the time to visit several of the many nature reserves and walk trails around the towns throughout the region.

Granite outcrops, sand plain country and extensive salt lake systems give rise to a great variety of colourful flowering perennials, trees and shrubs including flora rich species of acacia, eremophila, eucalypts, grevillea and hakea to name a few abound in these habitats.

For seasonal updates on the best 'wildflower hot spots' while exploring the region visit www.wheatbelttourism.com/wildflowers/current-wildflower-season or contact the Central Wheatbelt Visitor Centre for more information or to purchase any of several wildflower field guides and identification publications available. T: (08) 9041 1666.



ENTERPRISE

AGRICULTURE

The WA Wheatbelt sits astride a vast plateau, the Yilgarn Craton that dominates the southwest corner. The granite and ancient soils supporting a mosaic of open woodland, sandplain, and scrub is now where the Wheatbelt stands. It is essentially a region determined by sufficient rainfall to sustain forests and woodland and more recently broad acre dryland grain farming. The rainfall limit extends east and north by an average 270mm rainfall line and in the south and west by the 750mm rainfall line. It is also the favourable climate that suites the successful growth and maturation of cereal crops.

Across this region between 1945 and 1970, the woodlands were cleared to make way for agriculture. Now almost all the state's wheat and cereal grains are produced in the county extending east 350km inland to Southern Cross and encompassing key agricultural towns of Merredin, Moora, Narrogin and Northam. The Wheatbelts' primary enterprise is broad acre dry land farming through the growing and transport of grain by road and rail. Livestock, particularly sheep, also play an important role in profitable farming systems in the Eastern Wheatbelt.

Today the landscape is predominantly open farmland vistas that change with the seasons. Yellow fields of canola and green fields of wheat, oats or barley in winter and spring give way to the golden hues of mature crops in early summer before harvest and the patchwork quilt of ploughed fields ready for seeding in the autumn.

Agricultural Calendar

Seeding: Mid April - June
Harvesting: November - December
Main Shearing: Mid January - March
 July - October
Lambing: April-May (Autumn)
 May-June (Winter)
Hay Baling: September - October

Farming activities are very reliant on the weather and timing of the "opening rains"

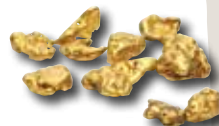


Edna May Mine Westonia

GREEN POWER GENERATION

Collgar Wind Farm is located south east of Merredin and is one of the largest single stage wind farms in Australia with 111 wind turbines. Collgar is a world leading wind farm site covering 18,000ha located on Wheatbelt farmland with uncontested high-quality grid access. Generating enough electricity to power a small city of 125,000 homes which results in greenhouse emissions reductions equivalent to taking 160,000 cars off the road every year or equivalent carbon reduction of planting 1 million trees. Visit the information shelter located on Bulls Head Road 25km south on the Narembreen Road.

Merredin Solar Farm is located on 460ha of former farming and grazing country adjacent to the Western Power Merredin Terminal and will connect to this facility at 220kV. A diesel power station is also located adjacent to the terminal on Robartson Road. Merredin Solar Farm will commission and commence power sales in 2020. The project owner, Risen Energy is involved in the detailed engineering design, through construction, commissioning and ultimately the operation of the solar farm. An integrated battery storage will be incorporated to provide continuous power during periods of peak demand. When the facility's useful 30 years of operating life is over, all physical infrastructure will be removed, and the land returned to its former agricultural use.



MINING

Some old gold prospecting areas discovered in the Wheatbelt still operate including Westonia and the Yilgarn fields at Bullfinch and Marvel Loch and iron ore at Koolyanobbing. The Edna May gold deposit is in the Westonia Greenstone Belt, within the Southern Cross Province of WA's Archaean Yilgarn Craton. Opened in early 1900s, this mine has been active several times since. Reopening for production in 2010 as an open pit mine using conventional drill and blast, load and haul methods and equipment. This mine has an access ramp to a lookout providing a spectacular viewpoint of this operational mine and mill. Soon, ore from the new Narembreen gold mine will be carted to Westonia Edna May processing plant.



Springtime Canola & Collgar Wind Farm, Merredin

EVENTS

Celebrate our culture!

Meet the community's locals and experience country hospitality throughout the year at weekend markets, annual agricultural shows and field days, spring festivals, touring theatre productions, music concerts, drive-in movies, motor sports and bush races. Australia Day and ANZAC Day are also celebrated in most regional communities. There is something for all ages, families or special interest groups and we invite you to include these colourful regional events on your travel itinerary.

To find events visit
www.wheatbelttourism.com/events
 or follow us on Facebook.



Bruce Rock Vietnam Veterans Reunion

POOLS & Aquatic Centres

Keep cool and make a splash!

Discover another depth to your eastern Wheatbelt experience during the summer months (November to March) and cool down in the regional towns' pools which are in full swing at this time of year. Stay overnight and swim daily in a different pool or aquatic centre, most have children's paddling pools, spray parks and amazing water slides to entertain the young at heart. Check the relevant local government website for opening hours.



Kulin Aquatic Centre

RV Friendly TOWNS & DESTINATIONS



RV FRIENDLY TOWN

Towns providing several amenities and services that welcomes the RV traveller.

Beacon

Casual Parking & Dump Point: Lucas St, opp Beacon Co-op
Short & Long Term Parking: Beacon Caravan Park, Lucas St
Cost: \$11pn u/p, \$26pn pwr
Potable Water: Beacon Caravan Park, Lucas St

Bencubbin

Casual Parking: Monger St
Short & Long Term Parking: Bencubbin Caravan Park, Koorda-Bullfinch Rd
Cost: \$11pn u/p, \$26pn pwr
Dump Point & Potable Water: Bencubbin Caravan Park, Koorda-Bullfinch Rd

Bruce Rock

Casual Parking: Johnson St
Short Term Parking: (Free 48hr) Near old tennis courts, 59 Dunstal St
Dump Point & Potable Water: Bruce Rock Caravan Park, Dunstal St

Dowerin

Casual Parking: Stewart St
Short Term Parking: Cnr East & Fraser Sts
Long Term Parking: (Free) Minnivale campground (12km east of Dowerin)
Dump Point: Stewart St & Minnivale Campground
Potable Water: Redding Rd

Kondinin

Casual Parking: Jones St, opp Town Hall, Big Rig to 11m
Short Term Parking: (Free 24hr) Town Hall parking area, 25 Jones St, Big Rig to 11m
Dump Point & Potable Water: Kondinin Caravan Park, 32 Gordon St

Koorda

Casual Parking: Railway St
Short Term Parking: Memorial Hall car park Cnr Allenby & Birdwood Sts,
Cost: \$5.50pn pay at shire office
Long Term Parking, Dump Point & Potable Water: Koorda Caravan Park, Scott St

Kulin

Casual Parking, Dump Point & Potable Water: Johnston St, South Side
Short & Long Term Parking: (Free 72hr) Kulin Discovery Zone Johnston St, vehicle access opp the Memorial Hall

Lake Grace

Casual Parking: Stubbs St
Short Term Parking: Lake Grace Caravan Park, Cnr Mather St & Dewar St
Cost: \$5pn or full amenities \$30pn
Dump Point: Sport Precinct, Stubbs St
Potable Water: Lake Grace Caravan Park Mather St (fee applies)

Meckering

Casual Parking, Dump Point & Potable Water: Memorial Park & Public Toilets, Gabbedy Pl
Short Term Parking: (Free 24hr) Memorial Park

Merredin

Casual Parking: East & West ends of Barrack St Car Park, (6am-6pm)
Short Term Parking: (Free 24hr) Merredin Peak Reserve, Benson Rd. Pets on a lead
Dump Point: Merredin Tourist Park, 2 Oats St
Potable Water: (Donation) Central Wheatbelt Visitor Centre, 85 Barrack St

Mukinbudin

Casual Parking: Strugnell St
Short & Long Term Parking, Dump Point & Potable Water: Mukinbudin Caravan Park, 25 Cruickshank Rd
Cost: \$15 u/p, \$30 pwr

Narembeen

Casual Parking: Adjacent to Apex Park on Currall St
Short & Long Term Parking, Dump Point & Potable Water: (Free 72 hr) Narembeen Caravan Park for fully self-contained RV's

Nungarin

Casual Parking: Railway Ave
Short Term Parking, Dump Point & Potable Water: Nungarin Rest Area, Railway Ave
Long Term Parking: Recreation Ground
Cost: \$15pn u/p, \$20pn pwr pay at shire office

Quairading

Casual Parking: Heal Street
Short Term Permit Parking: Greater Sports Ground, Travellers Rest Area - \$5.50pn (96hr)
Long Term Permit Parking: Toapin Weir Campsite - \$5.50pn
Dump Point & Potable Water: Winmar Rd (behind public amenities block)

Southern Cross

Casual Parking: Antares St & Achernar St
Short Term Parking: (Free 24hr) Old Information Bay, cnr Gt Eastern Hwy & Three Boys Rd, west of Southern Cross
Dump Point & Potable Water: RV service facility Cnr Achernar & Sirius Sts

Trayning

Casual Parking: Railway St & Twine St
Short Term Parking, Dump Point & Potable Water: Trayning Caravan Park, Bencubbin-Kellerberrin Rd
Cost: \$7.50pn u/p pay at shire office

Westonia

Casual Parking: Wolfram St
Short & Long Term Parking: St Luke's Church, 69 Wolfram St. Pets on lead.
Dump Point: Cnr Westonia-Carrabin Rd & Boodarockin Rd
Potable Water: Westonia Caravan Park, Wolfram St

RV FRIENDLY DESTINATION

A tourist attraction, homestead or country pub that caters for RV travellers.

Mangowine Homestead

Contact: (08) 9046 5149
Short & Long Term Parking: Karomin Rd (14km north of Nungarin)
Cost: \$7.50 u/p \$12.50 pwr. Length of stay negotiable.

Tammin

Contact: (08) 9637 1777
Short & Long Term Parking: (Free 96hr) Sweet Tammin Hotel, 23 Doonan St

Varley

Short Term Parking: (48hr) Varley Chicken Ranch, Cr Seward & Pitt St
Cost: Donation box on site



SERVICES *Directory*



ACCOMMODATION

The Eastern Wheatbelt offers a range of accommodation from Country pubs, hotel/motels, farmstays, bed and breakfast and caravan parks in pleasant settings.

Beacon
Beacon Caravan Park 0488 025 853

Bencubbin
Bencubbin Caravan Park (08) 9685 1202

Bruce Rock
Bruce Rock Caravan Park (08) 9061 1377
Bruce Rock Chalet 0459 490 053

Carrabin
Carrabin Roadhouse Hotel/Motel (08) 9046 7162

Corrigin
Corrigin Caravan Park 0428 178 121
Corrigin Hotel (08) 9063 2002
Corrigin Windmill Motel (08) 9063 2390
The Mains Guest House 0427 772 323

Cunderdin
Cunderdin Tourist Park (08) 9635 1258

Dowerin
Dowerin Short Stay Accommodation (08) 9631 1202

Hyden
Wave Rock Accommodation 0400 488 821
Wave Rock Caravan Park (08) 9880 5022
Wave Rock Hotel Motel (08) 9880 5052
Wave Rock Resort (08) 9880 5022

Karlgarin
Tressie's Caravan Park 0475 895 043

Kellerberrin
Kellerberrin Caravan Park (08) 9045 5894

Kondinin
Kondinin Caravan Park & Chalets (08) 9889 1006

Koorda
Dukin Short Term Stay (08) 9682 1005
Koorda Caravan Park & Yalambie Units (08) 9684 1219
Koorda Hotel (08) 9684 1226

Kulin
Ameli Cottage 0429 801 055
Kulin Caravan Park 0439 469 850
Wisteria House B&B 0488 595 186

Kununoppin
Rosevale Homestead Farmstay B & B 0474 985 837

Lake Grace
Lake Grace Saltbush Inn (08) 9865 1180

Meckering
Homestead Red Farm Accommodation 0407 205 068

Merredin
Bates Street Apartments (08) 9041 4358
Merredin Bed & Breakfast (08) 9041 4358
Merredin Motel (08) 9041 1886
Merredin Oasis Hotel (08) 9041 1133
Merredin Plaza All Suites (08) 9041 1755
Merredin Tourist Park (08) 9041 1535
Northside Tavern (08) 9041 1635
Olympic Motel (08) 9041 1588
The Lodge at Little Rock 0478 640 155
Westbrook Merredin 0428 416 666

Mukinbudin
Mukinbudin Caravan Park 0429 471 103

Narembeen
Narembeen Caravan Park (08) 9064 7308

Newdegate
Myriadena Motel & Caravan Park (08) 9871 1685

Nungarin
Nungarin Caravan Park (08) 9046 5006
McCorrys Old Hotel B&B 0497 575 907
The Woolshed Hotel (08) 9046 5084

Quairading
Quairading Caravan Park (08) 9645 2400

Southern Cross
Nulla Nulla Farm Retreat 0428 498 010
Palace Hotel (08) 9049 1555
Southern Cross Caravan Park & Sandalwood Lodge (08) 9049 1212

Tammin
Sweet Tammin Hotel (08) 9637 1777

Trayning
Trayning Caravan Park (08) 9683 1001
Trayning Hotel Motel (08) 9683 1005

Westonia
Westonia Caravan Park (08) 9046 7063
Westonia Tavern (08) 9046 7012

Wyalkatchem
Wyalkatchem Heritage Railway Barracks (08) 9681 1166
Wyalkatchem Hotel (08) 9681 1210



PET FRIENDLY NOTE

Caravan Parks displaying the pet friendly symbol are limited to caravan sites ONLY and do not apply to the parks onsite accommodation. Pets to be always kept on a leash. There are a limited number of pet friendly rooms in the Wheatbelt. More info www.wheatbelttourism.com/accommodation

SERVICES

Merredin
Cliff Haines Tyres & More (08) 9041 1851
The Cutting Room on Bates (08) 9041 5580

Mobile Service
Wheatbelt Caravan Services 0407 770 783



TOURS

Merredin
Njaki Njaki Aboriginal Cultural Tours 0407 984 470



PLACES TO EAT

Bruce Rock
Myola Nursery Café (08) 9061 1833

Carrabin
Carrabin Roadhouse (08) 9046 7162

Corrigin
Corrigin Hotel (08) 9063 2002
Corrigin Roadhouse (08) 9063 2210

Dowerin
Dowerin Bakery, News & Café (08) 9631 1031

Hyden
Bush Bakehouse (08) 9880 5678
Bush Bistro/Sandalwood Restaurant (08) 9880 5052
Hyden Roadhouse (08) 9880 5068
Wildflower Shoppe Country Kitchen (08) 9880 5182

Kellerberrin
Kellerberrin Farmers Co-Op (08) 9045 4105

Koorda
Koorda Hotel (08) 9684 1226
Koorda IGA Café (08) 9684 1322

Lake Grace
Café Arjo (08) 9865 2489
Walkers Hill Vineyard 0447 651 418

Merredin
Café 56 (08) 9041 5000
Commercial Hotel (08) 9041 4430
Dimensions Café 0499 240 953
Merredin Cinema & Café (08) 9041 1713
Northside Tavern (08) 9041 1635
Patty Kaye's Coffee & Food Van 0429 411 184
Subway Merredin (08) 9041 4607
Wild Poppy Café 0435 013 780

Mukinbudin
Mukinbudin Café (08) 9047 1122

Narembeen
The Narembeen Co-op Café 0447 403 373

Nungarin
McCorrys Old Hotel 0497 575 907
The Woolshed Hotel (08) 9046 5084

Southern Cross
Palace Hotel (08) 9049 1555

Tammin
Sweet Tammin Hotel (08) 9637 1777

Trayning
Trayning Hotel Motel (08) 9683 1005

Westonia
Westonia Tavern (08) 9046 7012

Wyalkatchem
Wyalkatchem Hotel (08) 9681 1210



Bruce Rock Chalet

The Bruce Rock Chalet offers clean, affordable accommodation. All Chalets come with comfortable beds, linen, air-conditioner and heater, fridge, toaster, kettle and TV. Breakfast and dinner are available by arrangement.

1 x queen bed with en-suite
2 x king single with en-suite

Bruce Rock

Contact: Nina McGellin
141 Butcher Street
Bruce Rock WA 6418
T: 0459 490 053
Email: nina.mcgellin@hotmail.com



Nungarin Caravan Park

Nestled in the heart of the north east Wheatbelt, the Nungarin Caravan Park is located next to the Nungarin Community Recreation Centre. Featuring room to power up 22 caravans at a time, with more space for those not needing power, Nungarin is the perfect base to setup and explore the beautiful surrounds. Easy access to toilets and showers all at an affordable price.



Shire of Nungarin

Railway Avenue, Nungarin
Tel: (08)9046 5006
Email: admin@nungarin.wa.gov.au

Rosevale Homestead Farmstay/B&B

A stay at Rosevale Homestead will introduce you to the tranquility and beauty of our wonderful region. Located just 10km south of Kununoppin, come and enjoy home cooked meals along with genuine, warm and friendly hospitality. Please call prior as bookings are essential.



Kununoppin

753 Purdy Road (corner Sachse Rd)
South Kununoppin WA 6489
Tel: 0474 985 837
Email: rosevalehomestead@gmail.com
Website: www.rosevalehomestead.net.au



Trayning Caravan Park

The Shire of Trayning relocated our caravan park to its new location on the Bencubbin/Kellerberrin Road back in 2009. We are constantly working to offer good amenities for those wanting to camp or enjoy the luxury of their own caravan at the Trayning Caravan Park. With drive through powered sites, (each with their own artificial turf), clean ablutions, campers kitchen, laundry, BBQ's, grassed area, great recreation facilities and much more. This quaint little spot really is the peace and quiet you have been looking for. For more information or bookings, call the Shire Admin Office.



Trayning

Shire of Trayning
Railway Street, Trayning WA 6488
Tel: (08) 9683 1001
Email: admin@trayning.wa.gov.au

Corrigin Windmill Motel



Located on the Brookton Highway 230km from Perth.

The Corrigin Windmill Motel is the perfect stopover if visiting Wave Rock or beautiful Esperance or a base for you to explore the region. Allow the country hospitality of Corrigin to welcome you to the rural heritage of the wheatbelt.

So, whether you require a base to explore the historic, pioneering Australia of days past, or you just need a restful stopover, the Corrigin Windmill Motel boasts clean, comfortable, recently renovated motel rooms all with reverse cycle air con, to meet your accommodation needs or budget.

The Corrigin Windmill Motel's accommodation caters to all travellers; business, holiday makers, families, gold prospectors or company group. Come. Check in. You deserve the break. Our friendly staff make every endeavour to ensure your stay is as memorable and enjoyable as possible.

FREE CONTINENTAL BREAKFAST AND WiFi

Corrigin

Tel: (08) 9063 2390
Email: admin@corriginwindmillmotel.com
Web: www.corriginwindmillmotel.net

Dowerin Short Stay Accommodation



A hidden gem in the Wheatbelt with quality, comfortable accommodation for business and leisure travellers, located a short stroll to local amenities and attractions.

- One-bedroom self-contained units with full kitchen
- Studio rooms with kitchenette, 1 with disabled access
- Powered caravan/camper sites with hardstand
- Sites for caravans/campers who are self-sufficient
- Grassed tent sites with power
- Modern ablutions & laundry facilities
- Camp kitchen & alfresco dining area

Dowerin

Located on Fraser Street, Dowerin
Tel: (08) 9631 1202 (Mon-Fri 8.30-4pm)
or 0429 311 202 A/H
Web: www.dowerinaccommodation.com.au
Email: dowshire@dowerin.wa.gov.au



Tressie's Museum & Caravan Park

- Modern park, quiet farm location, overlooking farm land.
 - Powered & un-powered van & camping sites. Drive thru bays.
 - Modern ablutions with disabled facilities, campers kitchen, TV reception.
 - Pet friendly
- 1 self-contained chalet-sleeps 6. Ensuite, kitchen/lounge, includes fridge, cooking facilities, TV, linen and RC air-con.
4 Cabin rooms - 3 twins, 1 double room.

Karlgarin

Address: 4313 Kondinin Hyden Rd

Mobile: 0475 895 043

Email: laurelt@activ8.net.au

Check us out on Wiki Camps



Myriadena Motel and Caravan Park

- Fully self-contained motel rooms with airconditioning
- New cabin and fully self-contained 2 bedroom cottage
- Caravan Park with shady, drive through powered sites
- Disabled friendly
- Friendly service, spotless ablution block and free barbeque
- Elgas LPG gas exchange and refills
- Kiosk and food to go

Newdegate

Address: 201 North Newdegate Road

Tel: (08) 9871 1685

Email: myriadena@bigpond.com

Find us on Facebook



Southern Cross Caravan Park

GPS: South 13°13.44 East 119°20.11

Conveniently located on Great Eastern Hwy, within walking distance of town centre, dog park, outdoor fitness centre and community pool. We offer 5th wheeler premium and drive-through bays, spacious tent sites, recently refurbished ablution block and an ensuite disability site and free wifi in parts of the park. The Sandalwood Lodge has fully equipped air-conditioned motel style rooms.

Southern Cross

10 Coolgardie Road (Great Eastern Hwy)

Southern Cross 6426

Accom: (2types) \$85-\$170

Site: \$16 - \$35

Tel: (08) 9049 1212

Web: www.yilgarn.wa.gov.au

Email: caravanpark@yilgarn.wa.gov.au



Heritage Railway Barracks Accommodation

Built in 1910 this accommodation is a rare example of barracks kept in the same configuration as left by the railways when it closed. Four reverse cycle air-con rooms – 2 double, 1 twin, 1 triple (1 bunk bed and 1 single bed) another 12 twin rooms have ceiling fans. Ideal for groups, travellers and contractors with a shared kitchen and living area, ladies and men's showers and toilets and laundry facilities for guests. The Barracks are centrally located to shops, hotel, bowling club & olympic swimming pool. For bookings and information contact the Shire Office.

Wyalkatchem

Shire of Wyalkatchem

27 Flint Street, Wyalkatchem WA 6485

Tel: (08) 9681 1166

Email: general@wyalkatchem.wa.gov.au

Web: www.wyalkatchem.wa.gov.au



Dukin Short Term Stay



Enjoy a peaceful, safe, quiet, clean and environment friendly stay at one of the houses on our 56 acre non-smoking property, with 360 degree hilltop views and perfect dark night sky for stargazers. We do offer the use of a telescope for those that would like to peruse the night sky and for those that enjoy the game of chess or draughts, a giant board and game pieces.

Our aim is to leave as little as possible carbon footprint on our fragile environment and have been working with the NRM on an ongoing project, to revegetate and restore the natural bushland to encourage the native birds and animals back to the area. Many of our guests have been treated to the joys of seeing some of the birds nesting and the wandering Echidnas across our bush paths.

Dukin / Koorda

667 Cooper Road, Dukin, Koorda WA 6475

Tel: (08) 9682 1005

Email: info@dukinshorttermstay.com.au

Web: dukinshorttermstay.com.au

Koorda Accommodation & Drive in



Koorda Caravan Park

Located on the edge of a bush reserve and close to the town centre. RV Friendly with 20 powered sites, grassed tent area, campers' kitchen and disabled ablution facilities.

Yalambee Units

6 self-contained one bedroom units each with a double or 2 singles. Kitchen/lounge includes fridge, reverse cycle air conditioning and TV, bathroom and laundry with washing machine. Shared BBQ facility. Units are serviced weekly and all linen and towels provided.

Koorda Drive In Theatre

One of only three left in WA, the Koorda Drive In has recently been renovated with a new Retro Café area and a brand new digital system installed to enhance the picture and sound quality. With up-to-date monthly movie releases in authentic 1950's surroundings, the Drive In is not only a great family fun night out with hot food and refreshments, but overall a truly memorable and unique experience! Facebook: Koorda Drive In

Shire of Koorda

Tel: (08) 9684 1219

Facebook: Shire of Koorda

Web: www.koorda.wa.gov.au



The Commercial Hotel Merredin

The Commi hotel is an iconic landmark located right in the centre of town. The hotel offers a classic range of bistro/pub meals with a great selection of beers and wines. We have the best tree lined beer garden and great country atmosphere. Pool table \$1 a game. Currently there is no accommodation available.

Merredin

62 Barrack Street
Merredin WA 6415
Tel: (08) 9041 4430
Email: hobbitsthree@gmail.com
Facebook: The Commercial Hotel



Westbrook Merredin

Self-contained studio accommodation in the Heart of the Wheatbelt, Western Australia.

Westbrook Merredin, features two self-contained studios offering guests private accommodation surrounded by over 3 acres of picturesque gardens and bushland, with views of Lewis Rock and only minutes from the Merredin town centre.

Merredin

25 Dobson Avenue, Merredin 6415
Tel: 0428 416 666
Email: welcome@westbrookmerredin.com
Website: www.westbrookmerredin.com



Shire of Tammin

Located 184km east from Perth on the Great Eastern Highway Tammin is a classic Wheatbelt town distinguished by iconic silos along the railway line. The Shire includes settlements of Bungulla and Yorkrakine with a population of 450 and covers an area of 1,087km². Enjoy the lush green Memorial Park with public conveniences and playground. RV sites and dump point are located at the Donnan Park Oval. As an RV Friendly Destination Tammin welcomes you to stay and explore Charles Gardner Nature Reserve, Kadjininy Kep, Hunts Well and Yorkrakine Rock. Contact the Shire for RV booking information.

Tammin

1 Donnan Street
Tammin WA 6409
Tel: (08) 9637 0300
Email: admin@tammin.wa.gov.au
Web: www.tammin.wa.gov.au



Cummins Theatre

This beautifully restored historic theatre is the jewel in Merredin's crown hosting a variety of touring productions, plays, comedy and Fringe Festival events throughout the year. While you're in Merredin treat yourself to the enchantment of this creative legacy which has been embracing audiences for over 90 years. Bookings at the Central Wheatbelt Visitor Centre or www.trybooking.com.au

Merredin

31 Bates Street, Merredin
Tel: (08) 9041 3295
Email: cumminstheatre@merredin.wa.gov.au
Website: www.cumminstheatre.com.au



Corrigin Visitor Information



Located in the heart of town the Corrigin Community Resource Centre is the local information point for all your Visitor enquiries.

Scenic Lookouts, Pioneer Museum, Gorge Rock, Dog Cemetery, Adventure Playground and Wildflowers, are just some of the attractions the Shire of Corrigin has to offer.

Come in and visit the Corrigin Community Resource Centre for information on things to do, where to stay and places to eat.

Open Monday – Friday 9am to 4:30pm (except Public Holidays).

Corrigin

55 Larke Crescent, Corrigin
Tel: (08) 9063 2778
Email: corrigin@crc.net.au
Web: www.corrigin.wa.gov.au



Shire of Westonia



"Where the Wheatbelt meets the Goldfields"

Visit Westonia and take a step back in time with the historic facades and Hood-Penn museum. Take a walk along the nature trail through 4,000ha of natural woodlands or take a picnic at one of several nature reserves with spectacular rock formations including Elachbutting & Baladjie. You can view an operational gold mine from the Edna May lookout. Westonia Shire Caravan Park comes complete with clean, tidy ablutions and camper's kitchen. The Park is budget friendly with 9 x powered sites from \$20/night, 3 powered tent sites and overflow facilities available.

Westonia

Tel: (08) 9046 7063
Fax: (08) 9046 7001
Corner Kaolin & Wolfram St, Westonia
Email: library@westonia.wa.gov.au



Merredin Motel & Gumtree Restaurant



Nestled amongst giant gumtrees and off the main highway our motel and restaurant offers guests a quaint, rustic country experience. Services include: day time restaurant, evening room service, BBQ facility, Foxtel, reverse cycle air-conditioning & WiFi.

Merredin

Tel: (08) 9041 1886
30-34 Gamenya Avenue,
Merredin WA 6415
Email: reception@merredinmotel.com
Web: www.merredinmotel.com



Rediscover Merredin



Just a short 2½ hour drive east of Perth, Merredin is pivotal to start your Wheatbelt experience in the heart of the grain growing region.

Experience our Railway and Military history, explore our granite outcrops, marvel at our massive silo art, discover our heritage trails and enjoy a live show at our iconic Cummins Theatre. Our cafés, restaurants, cinema and an ample retail sector will enhance your visit to the Central Wheatbelt. Plan now!

Merredin

Central Wheatbelt Visitors Centre
85 Barrack Street, Merredin
Tel: (08) 9041 1666
or 1300 736 283 (WA only)
Email: visitor@merredin.wa.gov.au
Web: www.wheatbelttourism.com



MERREDIN • TOURIST PARK •

LUXURY & BUDGET ACCOMMODATION



- ✦ Luxury 1 & 2 Bedroom Villas
- ✦ Budget Ensuite & Non-ensuite Rooms
- ✦ Caravan & Camping Sites



Discover the Wheatbelt ... just 260km from Perth

Merredin Tourist Park offers everything from camping through to luxury villas. The Park is a short stroll from the centre of town which offers facilities such as supermarkets, bowling club, golf club, hospital, post office and more.



2 Oats Street
Cnr Great Eastern Highway
Merredin WA 6415

08 9041 1535
info@merredintouristpark.com.au
merredintouristpark.com.au



Just 156kms from Perth, the Cunderdin Tourist Park is great for your next country retreat or stopover. Stay cool under the shade of our trees during summer or huddle around our firepit in winter.

What's on offer

- 16 powered drive-thru sites
- Comfy cabins, single units with ensuites
- Deluxe Chalets
- Modern ablutions, incl. disabled facilities
- Laundry facilities
- Well appointed camp kitchen & BBQ
- Short walk to town centre
- Pets accepted on sites only

42 Olympic Ave, Cunderdin WA 6407 | Ph: (08) 9635 1258
E: cunderdintp@outlook.com | Find us on FACEBOOK



Bruce Rock is located in the heart of the Wheatbelt, 245km east of Perth. A thriving agricultural town with an approximate population of 500 people, with 1000 people making up the Shire. We welcome visitors to enjoy the picturesque main street, gardens, amphitheatre and sculpture park, historic buildings, museums, federation style veranda's and great facilities.

With a great community spirit, rich agricultural history and plenty of services and facilities on offer, the Shire of Bruce Rock is an ideal country town to raise a family.



54 Johnson Street
Bruce Rock WA 6418
Phone: (08)9061 1377
Fax: (08)9061 1340

admin@brucerock.wa.gov.au
For more information visit our website
www.bruce-rock.wa.gov.au
or find us on Facebook



Beacon & Bencubbin Caravan Parks



Both Parks are located on the edge of each town providing peaceful and secluded settings. The Parks offer cabins, single ensuite units, powered and unpowered sites as well as camper kitchens, barbecues, laundries and disabled facilities for your convenience.



Bencubbin Caravan Park

Call (08) 9685 1202

or book online at

www.mtmarshall.wa.gov.au



Beacon Caravan Park

Call 0488 025 853

or book online at

www.mtmarshall.wa.gov.au

MUKINBUDIN CARAVAN PARK

Welcome

UNIQUE SHEARING SHED-THEMED CAMPERS KITCHEN. INDUSTRY LEADING ABLUTIONS WITH ENSUITES. IDEALLY SITUATED ADJACENT TO SWIMMING POOL, RECREATION OVAL, GOLF COURSE AND A SHORT WALK TO THE MAIN SHOPPING AREA.

- 19 x powered sites
- 3 x fully self-contained aircon park homes
- 4 x comfortable cabins
- 1 x 3 bedroom house
- Free NBN Wi-Fi, BBQ facilities
- Free swimming pool entry (in season)
- Dump point facilities available.



T: 0429 471 103

E stay@mukinbudin.wa.gov.au

W: www.mukinbudin.wa.gov.au

25 Cruikshank Road, Mukinbudin





Only 200km east of Perth on the Great Eastern Highway, discover the start of the outback wildflower country. Meander along the heritage walk, which takes you through the towns landscaped main street, past historic buildings and churches, concluding at the stunning Kellerberrin Hill Lookout. The newly redeveloped Centenary Park offers a nature-play playground, skate park and grassed area with BBQ facility. Explore the Pink Bridge, painted for breast cancer awareness. This park will be fun for the whole family! The country side surrounding Kellerberrin offers rocky outcrops and scenic hills to climb, offering breathtaking panoramic views. The Kellerberrin Caravan Park offers powered sites, cozy rooms with shared facilities, 12 self-contained units, modernised kitchen, new toilet block and wifi. Have you booked your stay?

Check us out on wikicamps.com.au | For further information, contact:

Phone: (08) 9045 4006 | Caravan Park: 0428 138 474

Email: shire@kellerberrin.wa.gov.au | Web: www.kellerberrin.wa.gov.au



Kondinin

Red Soil Riches

Karlgarin

Small and Proud

Hyden

Bush Living at its Best



Spanning across our three towns the Shire of Kondinin boasts fertile farmlands, spectacular woodlands, starry nights, majestic salt lakes, amazing granite outcrops - including the famous Wave Rock, and colourful wildflowers during Spring. For the walking enthusiasts the Shire offers many different natural walking trails through local bushland and granite outcrops as well as local town walks showcasing fantastic community public art work. With some great spots to stay to suit your needs including hotel, motel, B&B, resort, caravan parks, modern

chalets or camping areas and some top places to eat, the Shire is your perfect getaway.

Our Local event Calendar includes:

- **Friday 6th March 2020** - Gourmet in the Kondinin Community Garden. Wine and dine under the stars with food cooked by invited chef using fresh produce from the garden and the local area.
- **Saturday 12th April 2020** - The Karlgarin Easter Markets at Karlgarin Hall followed by Gilgie Races at the Karlgarin Country Club.

- **Saturday 25th April 2020** - the moving Anzac Day Dawn Service at Yeerakine Rock, Kondinin.
- **Saturday 26th and Sunday 27th September 2020** - Wave Rock Weekender, Hyden.
- **Friday 9th to Wednesday 14th October 2020** - the popular Kondinin Art Exhibition. Opening night Friday and open daily 10am to 4pm Saturday to Wednesday at Kondinin Town Hall.
- **Saturday 10th & Sunday 11th October 2020** - Karlgarin Centenary celebrations.

Contact the Shire of Kondinin on (08) 9889 1006
www.kondinin.wa.gov.au or find us on Facebook.

Narembeen - Together we grow



Located strategically between Wave Rock and the Great Eastern Highway and only 286km east of Perth, Narembeen is predominantly an agricultural town which offers vibrant scenery that reflects Australia's true farming lifestyle.

The Grain Discovery Centre, a modern interpretive museum, tells the story of WA's grain industry from the paddock to the plate. The museum features a special exhibition dedicated to farmers, their role in the agriculture industry and the seasonal calendar.

Nature enthusiasts will appreciate the undisturbed beauty of the many stunning reserves with nature trails that take in tall salmon gums, native animals and during spring – splendid wildflowers. Attractions include Roe Lookout, Roe Dam and Hidden Hollow.

Pick up a bargain as you wander through the Narembeen Community Shed which features local craft works created by talented local residents.

Narembeen offers top class facilities including a supermarket, hotel, motel, doctor and hospital. The RV Friendly Caravan Park is the perfect spot to stop, offering powered sites, modern cabins, ablution block and BBQ.



Shire of Narembeen:
T: (08) 9064 7308

E: admin@narembeen.wa.gov.au
W: www.narembeen.wa.gov.au

Narembeen CRC:
T: (08) 9064 7055

E: crcreception@narembeen.wa.gov.au
W: www.narembeen.wa.gov.au

Photo Credit: Strange Images Photography
www.strangeimagesphotography.com

SHIRE OF YILGARN

"Good Country for Hardy People"

Located 368km east of Perth and 225km west of Kalgoorlie, Southern Cross, the hub of the Shire of Yilgarn is often referred to as the gateway to the Goldfields or alternatively the gateway to the Wheatbelt depending on which way you are travelling along the Great Eastern Highway. The Shire motto is "Good Country for Hardy People" which aptly describes the resilience of the people that call the area home.

Named after the constellation that guided the founders in 1888, today all the streets in Southern Cross are named after stars and constellations.

The gold prospecting history of the region is richly displayed at the Yilgarn History Museum which is situated in the building that was originally the first courthouse built

east of York in 1892. Agricultural displays also round out the history of the area with both farming and mining being the main industries.

Explore the rich history of the region and enjoy the modern facilities provided, including clean amenities, an outdoor gym, dog exercise park and free wifi in the main town site.



Shire of Yilgarn | T: (08) 9049 1001
23 Antares Street, Southern Cross WA 6426



IMMERSE YOURSELF IN MAGICAL LANDSCAPES.

IT'S TIME TO DISCOVER LAKE GRACE, NEWDEGATE, LAKE KING & VARLEY.



With striking salt lakes, unusual rock formations and wildflower walks, our landscapes will inspire any level of photographer. There is much to explore with historical museums, cultural story trails and public art displays including the stunning PUBLIC Silo Trail native wildlife mural by Brenton See in Newdegate.

WWW.LAKEGRACEVISITORCENTRE.COM.AU

RV LAKE GRACE RV FRIENDLY TOWN

LAKE GRACE
VISITOR CENTRE



PHOTOGRAPHY BY PRESENT MOMENT PHOTOGRAPHY



Quairading

Toapin Weir
Pink Lake
Nature Reserve
Great coffee
Friendly locals
Cold beer
+ so much more



www.visitquairading.com.au

Visit us for more info:

Quairading CRC
1 Parker Street Ph: 9645 0096

Shire of Quairading Admin Centre
10 Jennaberring Road Ph: 9645 2400





Western Australian Community Resource Network

your local connection

- | | | | |
|--|---|---|--|
| <ul style="list-style-type: none"> • Beacon Central WA 6472
11 Rowlands Street
P: 9686 1014
E: beacon@beaconcrc.net.au | <ul style="list-style-type: none"> • Dowerin WA 6461
13 Stewart Street
P: 9631 1662
E: dowerin@crc.net.au | <ul style="list-style-type: none"> • Kulin WA 6365
38 Johnston Street
P: 9880 1021
E: crccounter@kulin.wa.gov.au | <ul style="list-style-type: none"> • Quairading WA 6383
1 Parker Street
P: 9645 0096
E: quairading@crc.net.au |
| <ul style="list-style-type: none"> • Bencubbin WA 6477
283 Monger Street
P: 9685 1007
E: bencubbin@crc.net.au | <ul style="list-style-type: none"> • Hyden WA 6359
40 Naughton Street
P: 9880 5088
E: hyden@hydenrc.com.au | <ul style="list-style-type: none"> • Merredin WA 6415
110 Barrack Street
P: 9041 1041
E: merredin@crc.net.au | <ul style="list-style-type: none"> • Southern Cross WA 6426
Canopus St
P: 9049 1688
E: crc@yilgarn.wa.gov.au |
| <ul style="list-style-type: none"> • Bruce Rock WA 6418
40-42 Johnson Street
P: 9061 1687
E: roctel@wn.com.au | <ul style="list-style-type: none"> • Kellerberrin WA 6410
94-96 Massingham Street
P: 9045 4991
E: kellerberrin@crc.net.au | <ul style="list-style-type: none"> • Mukinbudin WA 6479
8 White Street
P: 9047 2150
E: admin@mukacrc.net.au | <ul style="list-style-type: none"> • Westonia WA 6423
33 Wolfram Street
P: 9046 7077
E: manager@westonia.org.au |
| <ul style="list-style-type: none"> • Corrigin WA 6375
55 Larke Crescent
P: 9063 2778
E: corrigin@crc.net.au | <ul style="list-style-type: none"> • Kondinin WA 6367
3-5 Gordon Street
P: 9889 1117
E: kondinin@crc.net.au | <ul style="list-style-type: none"> • Narembreen WA 6369
2/19 Churchill Street
P: 9064 7055
E: crcmanager@narembreen.wa.gov.au | <ul style="list-style-type: none"> • Wyalkatchem WA 6485
Lot 5700 Railway Terrace
P: 9681 1500
E: wyalkatchem@crc.net.au |
| <ul style="list-style-type: none"> • Cunderdin WA 6407
57 Main Street
P: 9635 1784
E: cunderdin@crc.net.au | <ul style="list-style-type: none"> • Koorda WA 6475
43 Railway Street
P: 9684 1081
E: manager@koordacrc.net.au | <ul style="list-style-type: none"> • Nungarin WA 6490
28 Railway Avenue
P: 9046 5400
E: crc1@nungarin.com.au | |

CRCs provide a central, easily accessible point for local people, businesses and visitors to access a comprehensive collection of essential information and services. These services can include:

- Printing, Scanning and Faxing
- Internet Access + Wi-Fi
- Photo Printing
- Desktop Publishing
- Government/Community Information
- Video Conferencing

Many CRCs deliver a range of services on behalf of external agencies including:

- Medicare
- Centrelink
- Licensing and Training Organisations
- Banks
- Post Offices
- Visitor Information Centres
- Public Library
- Local Newspaper

For details on the services available at your local CRC, find their website on www.crc.net.au.



PLAN YOUR VISIT TO THE
EASTERN WHEATBELT
today!



CENTRAL WHEATBELT VISITOR CENTRE

CENTRAL WHEATBELT VISITOR CENTRE

Contact us for assistance with information or we can post you our range of FREE maps and guides to assist with your travel plans.

VISIT US

85 Barrack Street, Merredin WA
(08) 9041 1666
or 1300 736 283 (WA only)
visitor@merredin.wa.gov.au
www.wheatbelttourism.com

GET SOCIAL WITH US

f facebook.com/CWVCMerredin
@centralwheatbeltvisitorcentre



Wave Rock Visitor Centre, Hyden
(08) 9880 5182

Kulin Visitor Centre & Community
Resource Centre (08) 9880 1021



Lake Grace Visitor Centre (08) 9865 2140

Community Resource Centres listed on page 30

TRAVELLING WITH PETS



Pet Friendly Places: Your pet needs to stretch its legs too! For a safe place to exercise your four-legged friend we have two dedicated dog exercise parks along the Great Eastern Highway. **Merredin Dog Park** provides for small and large dogs, the 2 fully fenced exercise areas with automatic watering points is located on corner of Bates & Coronation Streets adjacent to the Merredin Library with plenty of parallel parking for caravans & long RV's. **Southern Cross Dog Park** has a fully fenced & gated obstacle course, agility exercise equipment, a water fountain, drinking bowl and bench seating for the owners. Located at the corner of Achernar and Sirius Streets, next to the RV Dump Point site.



The Eastern Wheatbelt Visitor Guide Edition 6 was printed in Feb 2020

ELECTRIC VEHICLE CHARGING



The following towns offer EV charging points

Bruce Rock	Amphitheatre, Johnson St
Corrigin	Corrigin Hotel 17 Walton St & Corrigin Windmill Motel, Brookton Hwy
Hyden	Hyden Roadhouse, Marshall St
Kulin	Public Amenities, 49 Johnson St
Lake Grace	Lake Grace Roadhouse, 96 Stubbs St
Merredin	Central Wheatbelt Visitor Centre, 85 Barrack St & Merredin Rec Centre, Bates St
Southern Cross	Southern Cross Oval, 98 Spica St

This reprint was made possible with the support of
the following Eastern Wheatbelt Local Governments

Shire of Bruce Rock	(08) 9061 1377
Shire of Corrigin	(08) 9063 2203
Shire of Cunderdin	(08) 9635 2700
Shire of Dowerin	(08) 9631 1202
Shire of Kellerberrin	(08) 9045 4006
Shire of Kondinin	(08) 9889 1006
Shire of Koorda	(08) 9684 1219
Shire of Kulin	(08) 9880 1204
Shire of Lake Grace	(08) 9890 2500
Shire of Mt Marshall	(08) 9685 1202
Shire of Merredin	(08) 9041 1611
Shire of Mukinbudin	(08) 9047 2100
Shire of Narembeen	(08) 9064 7308
Shire of Nungarin	(08) 9046 5006
Shire of Quairading	(08) 9645 2400
Shire of Tammin	(08) 9637 0300
Shire of Trayning	(08) 9683 1001
Shire of Westonia	(08) 9046 7063
Shire of Wyalkatchem	(08) 9681 1166
Shire of Yilgarn	(08) 9049 1001

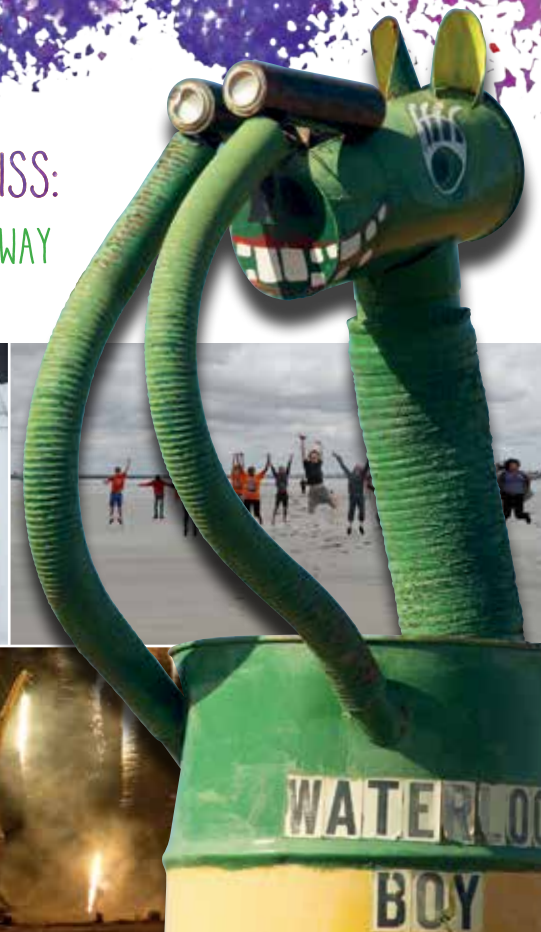
Visit Kulin AND ADD COLOUR TO YOUR WHEATBELT ADVENTURE!

A FEW **colourful** KULIN ATTRACTIONS NOT TO MISS:

KULIN BUSH RACES
3 OCTOBER 2020

STUNNING WILDFLOWERS
JUNE - OCTOBER (SEASONS MAY VARY)

TIN HORSE HIGHWAY
YEAR-ROUND



 Shire of Kulin Administration and Community Resource Centre | PH: (08) 9880 1021
E: crccounter@kulin.wa.gov.au | W: www.kulin.wa.gov.au | Open: Mon-Fri 8:30am-4:30pm

